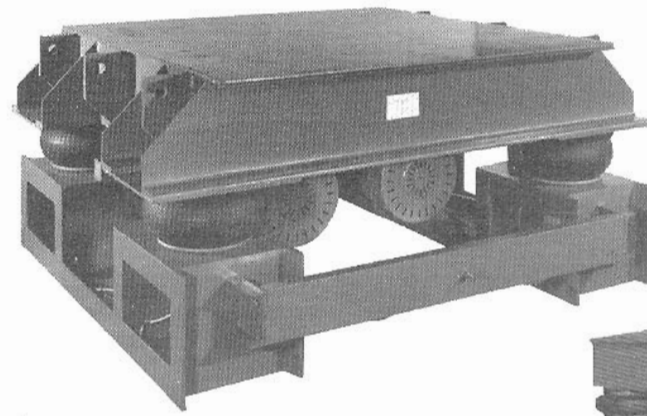


# MODEL FD FLAT DECK VIBRATORY TABLE

## Electric or Air Powered

**MODEL FD**, BEST'S most versatile flat deck vibratory tables are designed to settle and compact drums and bulk boxes and to deaerate products in moulds such as in refractory and concrete. They can also be used in foundry operations beneath continuous and pod type mixers, in the densification of no bake, air set and green sands in flasks and core boxes.

Both the piston air-operated units and twin motor rotary electric units provide an up and down linear vibratory action offering the ideal motion required for the best densification. Optional rotary air units are offered where frequencies above 3600 RPM are necessary in the refractory industry. The air-operated units



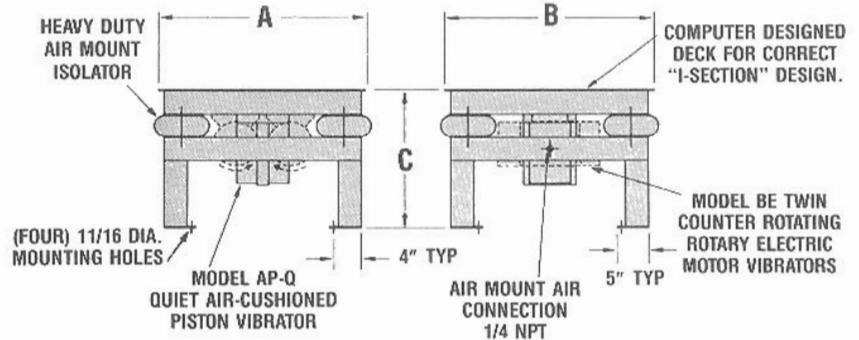
▲ Special Heavy Duty MODEL FD-7272-11440-4-(2) Vibrating Table. 72" x 72" deck powered by twin 3 HP motor vibrators. Designed to compact sand in foundry flasks weighing up to 10 tons.



MODEL FD-2424-350 air powered table with 24" x 24" deck, Model 350 air drive and 30" overall height. ▶

are remotely variable in intensity by varying input air pressure with a pressure regulator. The motor-type electric units are mechanically adjustable to vary force output, but can also be supplied with a variable speed inverter type AC motor controller for remote variable RPM control.

Units are offered with air-mount isolators as standard, with coil springs as an option. Other optional features include outboard mounted motors for low profile, non-metallic lined decks for handling metal containers. Bolt-on retainer lips and clamping devices are also available.



AIR POWERED MODEL	DECK SIZE A x B	HEIGHT (C) MIN. O.A.	DESIGN LOAD CAP. (lbs.)
FD-1818-200	18 x 18	12	200
FD-1818-350	18 x 18	13	500
FD-2424-200	24 x 24	12	200
FD-2424-350	24 x 24	13	500
FD-2424-400	24 x 24	16	1,000
FD-3030-350	30 x 30	13	500
FD-3030-400	30 x 30	16	1,000
FD-3636-350	36 x 36	14	500
FD-3636-400	36 x 36	18	1,000
FD-4848-400	48 x 48	18	1,000

NOTES: All dimensions in inches • Standard height of 24" is furnished if minimum height is not required. • Control kit consists of FRL (lubro-control) solenoid valve and 5 ft. long hose with fittings, shipped loose. • Air mounts are circuited and furnished with regulator. • All units are quiet operating and meet OSHA noise levels. Level is 70 to 75 dba at 3 ft. away. • Finish paint "BEST" blue enamel.

ELECTRIC TABLE MODEL NUMBER			DECK SIZE A x B	HEIGHT (C) MIN. O.A.	DESIGN LOAD CAP. (lbs.)
3600 RPM	1800 RPM	1200 RPM			
FD-2424-440-2-(2)	FD-2424-330-4-(2)	Not Available	24 x 24	12	200
FD-2424-770-2-(2)	FD-2424-660-4-(2)	Not Available	24 x 24	13	500
FD-3030-770-2-(2)	FD-3030-660-4-(2)	FD-3030-660-6-(2)	30 x 30	13	500
FD-3030-1320-2-(2)	FD-3030-1320-4-(2)	FD-3030-1100-6-(2)	30 x 30	13	1,000
FD-3636-770-2-(2)	FD-3636-660-4-(2)	FD-3636-660-6-(2)	36 x 36	14	500
FD-3636-1320-2-(2)	FD-3636-1320-4-(2)	FD-3636-1100-6-(2)	36 x 36	14	1,000
FD-3636-2200-2-(2)	FD-3636-2640-4-(2)	FD-3636-1980-6-(2)	36 x 36	16	2,000
FD-4848-1320-2-(2)	FD-4848-1320-4-(2)	FD-4848-1980-6-(2)	48 x 48	18	1,000
FD-4848-2200-2-(2)	FD-4848-2640-4-(2)	FD-4848-2860-6-(2)	48 x 48	18	2,000
FD-4848-3520-2-(2)	FD-4848-3740-4-(2)	FD-4848-3980-6-(2)	48 x 48	20	3,000
FD-4848-5060-2-(2)	FD-4848-5280-4-(2)	FD-4848-5280-6-(2)	48 x 48	21	5,000

NOTES: All dimensions in inches • Standard height of 24" is furnished if minimum height is not required. • Control kit consists of twin motor starter in NEMA 12 enclosure. • Air mounts are circuited and furnished with regulator. • All units are quiet operating and meet OSHA noise levels. Normal level is 70 to 75 dba at 3 ft. away. • Finish paint "BEST" blue enamel. • Units larger than 48 x 48 are available. Consult factory.