

MODEL GD GRID DECK VIBRATORY TABLE

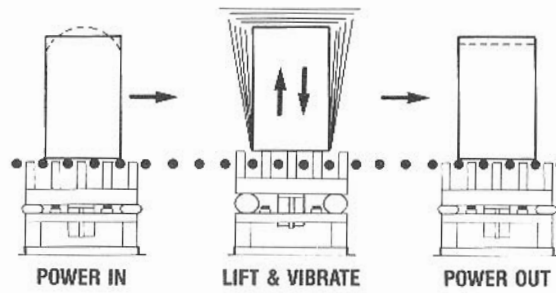
**Air Powered
For Roller
Conveyor Systems
Ideal for
Hazardous Areas...
Explosion Proof**

MODEL GD, air-powered grid deck is similar to the electric model, except vibration is supplied by a pneumatic, quiet operating (non-impacting) piston vibrator. Noise level of our pneumatic units is typically 60-70 decibels, well below the acceptable 85 decibels specified by OSHA.

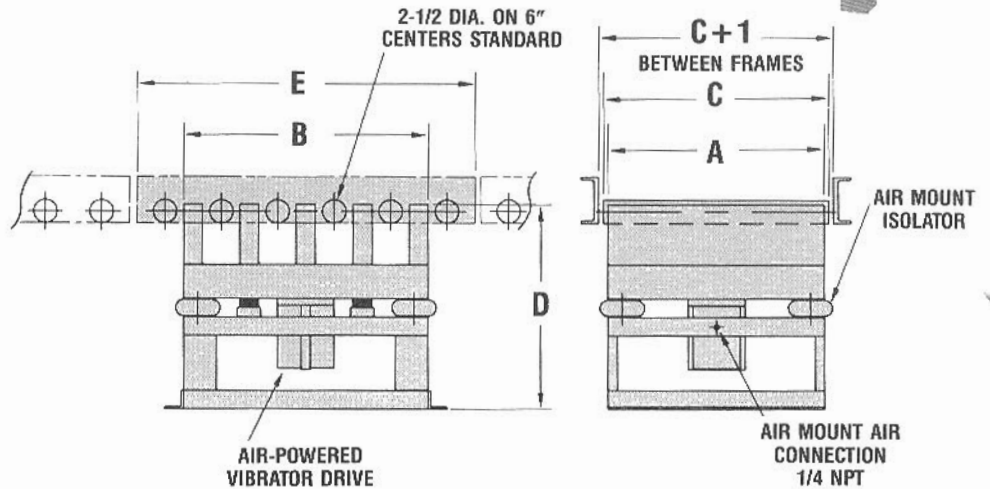
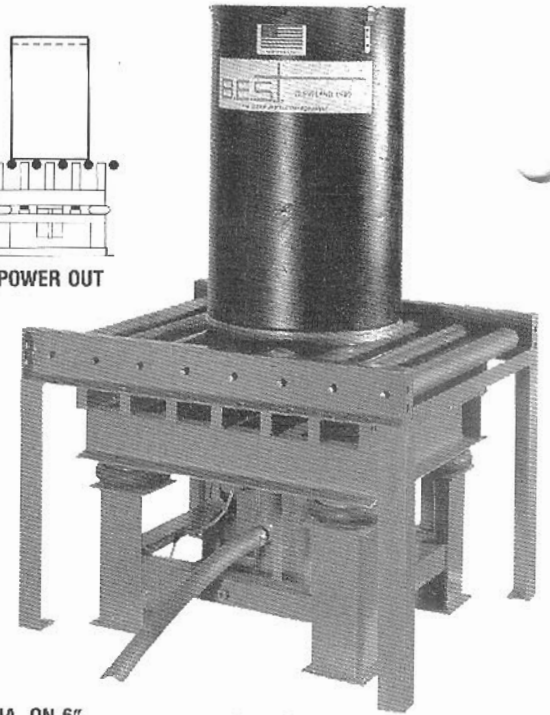
Vibration is controlled remotely by varying input air pressure thru a pressure regulator. Typical manual controls include a (FRL) lubro control, solenoid valve for vibrator and a solenoid valve and pressure regulator for air mounts. Air mounts are circulated to a common air intake.

The motion of the piston vibrator is linear, up and down, ideal for compaction of drums, moulds and bulk boxes. Vibration is started and stopped instantaneously with no drum walking.

Standard grid deck units are designed to accommodate rolls that are 2-1/2" in diameter on 6" centers. Special units for smaller roll diameters and closer centers are available.



MODEL GD-2326-400 air powered grid table with 23' x 26" deck and model 400 air drive. Designed to handle fibre (lever packs) and 55 gallon drums.



MODEL	A	B	C	NOMINAL CAPACITY (lbs.)	D	E	FREQ. (CPM) @60 psig	AIR CNSMP. (CFM) @60 psig	SHIP WT. (lbs.)
GD-2326-350	23	26	24	500	22	36	2,400	21	350
GD-2326-400	23	26	24	1,000	24	36	2,100	30	410
GD-2338-350	23	38	24	500	22	48	2,400	21	450
GD-2338-400	23	38	24	1,000	24	48	2,100	30	525
GD-2350-400	23	50	24	1,000	24	60	2,100	30	550
GD-2938-350	29	38	30	500	22	48	2,400	21	475
GD-2938-400	29	38	30	1,000	24	48	2,100	30	550
GD-2950-400	29	50	30	1,000	24	60	2,100	30	650
GD-2950-500	29	50	30	2,000	28	60	1,100	35	775
GD-3538-400	35	38	36	1,000	24	48	2,100	30	625
GD-3538-500	35	38	36	2,000	28	48	1,100	35	725
GD-3550-400	35	50	36	1,000	24	60	2,100	30	685
GD-3550-500	35	50	36	2,000	28	60	1,100	35	815
GD-4150-400	41	50	42	1,000	24	60	2,100	30	750
GD-4150-500	41	50	42	2,000	28	60	1,100	35	875
GD-4750-400	47	50	48	1,000	24	60	2,100	30	800
GD-4750-500	47	50	48	2,000	28	60	1,100	35	925

NOTES: All dimensions in inches • The above standard units can be modified to meet specific requirements. Tables can be furnished with or without conveyor roller sections. BEST also fabricates to suit your existing roller conveyor diameter and centers. Standard grid decks are designed for 2-1/2" diameter rolls mounted on 6" centers. Controls can be manual or automatic, roller weighing feature is optional for net weighing of container contents.

B.E.S.T., Inc. - Toll Free: 1.800.827.9237 - or - info@vibratingtables.us