

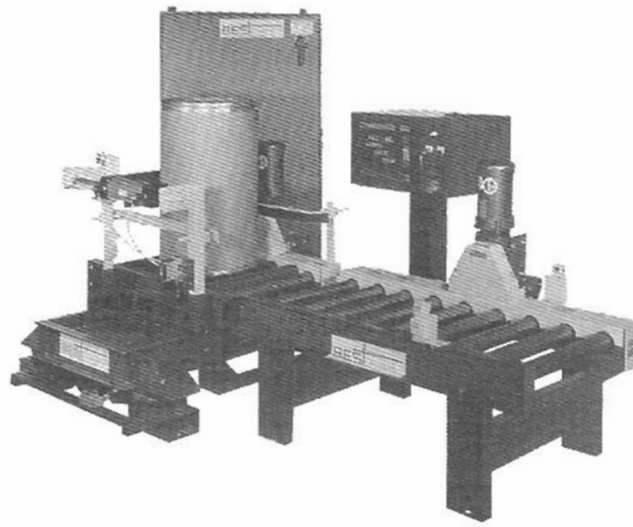
MODEL GD-OS

GRID DECK OVER SCALE VIBRATORY TABLES

Air & Electric Powered

BEST'S over-scale vibrating tables are designed to settle and compact drums and bulk boxes while weighing final net contents.

The container is placed in the system with the vibratory deck in the lowered position. The container is tared (scale zeroed) and then the filling operation is started. Upon reaching the first set point weight of the scale's batch controller, usually 50% of final weight, the air mounts are energized lifting the container free of the scale. Once in the raised position, the safety limit switch allows the vibrators to start and run on a timed vibration cycle. After vibrating for a few seconds, the vibration is stopped and the container is again lowered on to

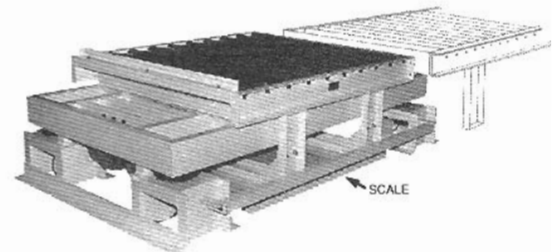


▲ GD-OS-2938-1100-6-(2) automatic drum filling line, with drum positioner and computerized batching interface controller. All conveyors are powered, chain-driven live rollers with electric eye sensors.

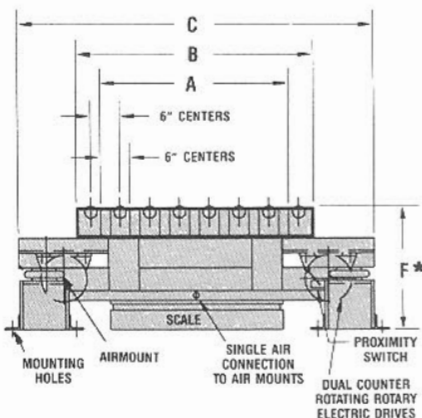
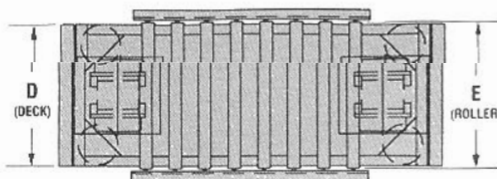
Close-up view of computer package for automatic batching mounted on operator pedestal. ▼



GD-OS-4750-2860-6-(2) with tension load cell type scale, powered roller section and automatic sequence control panel supplied. Digital weight display not shown.



MODEL GD-OS-4750-5280-6-(2) grid table with special outboard drives and 47'x50' deck.



GRID DECK OVER SCALE MODEL NUMBER	NOMINAL LOAD CAPACITY (lbs.)	A	B	C	D	E	* F	VIBRATOR H.P. (each)
GD-OS-2938-1100-6-(2)	1,000	38	48	72	29	30	22	0.5 H.P.
-1980-6-(2)	2,000	38	48	72	29	30	24	0.8 H.P.
GD-OS-4750-2860-6-(2)	2,500	50	60	84	47	48	24	1.1 H.P.
-5280-6-(2)	5,000	50	60	84	47	48	26	2.0 H.P.

NOTES: All dimensions in inches. • Table supplied with dual motor starter in a NEMA 12 enclosure. • Dynamic brake optional. • Air powered drives are optional.

* Standard height to top of rolls. Consult factory for special height requirements, or for lower profiles. Height will vary with manufacturer and model scale selected for system.